

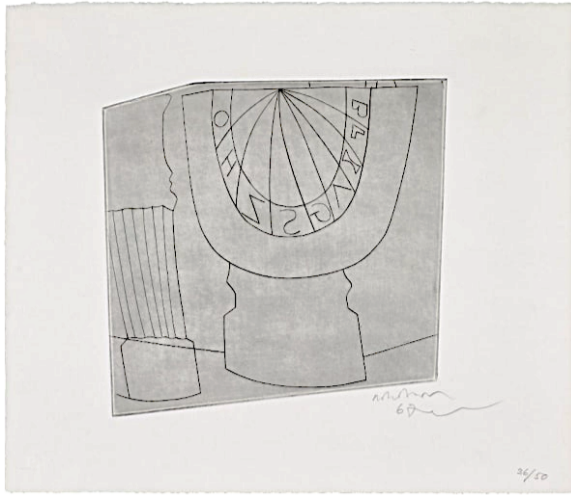
8th January 2025

Press Release: Upcoming Art Exhibitions

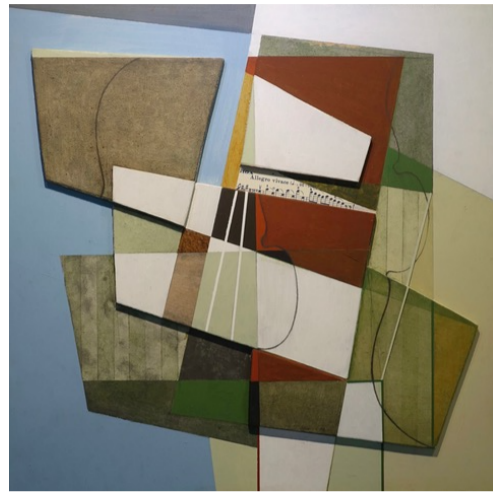
PORTHMINSTER GALLERY

Ben Nicholson – Greek and Turkish Forms with Patrick Haughton – Earth Song

6th March to 4th April 2025



Turkish Sundial and Column, 1967–68 by Ben Nicholson OM.
Etching on wove paper, signed in pencil, edition of 50.



Earth Song 6 – Allegro Vivace, 2024 by Patrick Haughton.
Acrylic painted relief construction, h 40 x w 40 cm.

Ben Nicholson – Greek and Turkish Forms

From 6th March to 4th April 2025, the Porthminster Gallery presents *Ben Nicholson – Greek and Turkish Forms*, a selling exhibition of framed signed etchings from Nicholson's 1967–68 suite. Based on drawings of Aegean motifs and architecture made on holiday cruising the Greek islands and Turkish coast in 1967, Nicholson's subtly toned, playful and expressive linear etchings are a sophisticated example of the artist's unique take on the world around him.

This was only the second of three portfolio suites of etchings that Nicholson produced – each in collaboration with the printmaker François Lafranca who printed the copper plates which Nicholson engraved at his home above Lake Maggiore in Switzerland. Each etching is signed in pencil, dated '67', and numbered from the edition of 50. Published in 1968 by Ganymed Original Editions, Ltd., and Marlborough Fine Art, London, editions of the suite are held in the collections of the V&A; Museum of Fine Arts Boston; and the National Gallery of Australia.

Patrick Haughton – Earth Song

Also, from 6th March to 4th April 2025, the Porthminster Gallery presents *Patrick Haughton – Earth Song*, an exhibition of new and recent elegantly understated paintings and painted relief constructions on board, inspired by the ancient landscapes of West Cornwall. An exploration of the remnant, fugitive shadows residually tracing the passage of life through time and place.

The artists' works on show are complemented with abstract bronze sculptures by Margaret Lovell, and Tommy Rowe, and ceramic sculptures by Peter Hayes, who, in keeping with Nicholson and Haughton, are also inspired by ancient motifs and landscapes.

The Own Art 0% APR purchase plan is available on all works in the show.

Porthminster Gallery, 22 Fore Street, St Ives, TR26 1HE

info@porthminstergallery.co.uk | www.porthminstergallery.co.uk

– END –

Print Ready 300dpi images for press use:

[Ben Nicholson – Greek and Turkish Forms etchings](#)

[Patrick Haughton – Earth Song paintings](#)

Artist Statement + Biography:

[Ben Nicholson biography](#)

[Patrick Haughton statement and biography](#)

Listings information:

Porthminster Gallery, 22 Fore Street, St Ives TR26 1HE

(near the Barbara Hepworth Studio and Garden)

+44 (0)1736 795888 | porthminstergallery.co.uk

Open six days a week, Mon–Fri 10am–5pm, Sat 11am–4pm. Admission free.

Social Media:

#porthminstergallery

Instagram: @porthmingallery

Notes to Editors: About Porthminster Gallery

With an international reputation amongst art and craft collectors for its paintings, sculptures, and quality contemporary studio ceramics, the award-winning Porthminster Gallery is regarded as one of the most important spaces for contemporary artists in St Ives. In 2025 the Porthminster Gallery celebrates its eighteenth year in St Ives, Cornwall, and 25 years in business.

Established by art patrons and gallery directors David Durham and Dee Bray-Calvert in York in April 2000 as the 'Adze' and 'Minster Fine Art' galleries, the business was relocated to St Ives in 2008 as the 'Porthminster Gallery' to concentrate its focus on the art of St Ives and Cornwall. Since then, the gallery has championed the work of more than 90 living British artists through its progressive and expertly curated programme of 160+ shows and has showcased and introduced many young up-and-coming artists to an appreciative local and global collectorship.

The gallery has also gained a strong reputation over the last 18 years for its impressive shows and changing stock of 20th Century Modern St Ives and British Art.

Porthminster Gallery won the Cornwall Today readers' award for 'Best Art Gallery in Cornwall' 2014/15 and has been featured in BBC2's Coast series and more recently in Sky Art's Tate Walks series.